



GENERAL MILLS  
BAKERIES & FOODSERVICE

16000-31915  
Trix Cereal Bar  
NET WT 1.42 OZ (40g)

Printed: 05/22/2015

**INGREDIENTS:**

Whole Grain Oats, Cereal (whole grain corn, sugar, corn meal, corn syrup, rice bran and/or canola oil, salt, calcium carbonate, tricalcium phosphate, trisodium phosphate, color [red 40, yellow 6, blue 1 and other color added], zinc and iron [mineral nutrients], natural and artificial flavor, citric acid, malic acid, Vitamin C [sodium ascorbate], A B Vitamin [niacinamide], Vitamin B6 [pyridoxine hydrochloride], Vitamin B2 [riboflavin], Vitamin B1 [thiamin mononitrate], Vitamin A [palmitate], A B Vitamin [folic acid], Vitamin B12, Vitamin D3, BHT added to retain freshness), Corn Syrup, Sugar, Fructose, Canola And/or Rice Bran Oil, Whole Wheat Flour, Chicory Root Extract, Maltodextrin, Brown Rice Flour. Contains 2% or less of: Glycerin, Calcium Carbonate, Corn Flour, Whole Oat Flour, Wheat Starch, Salt, Gelatin, Natural and Artificial Flavor, Baking Soda, Color (red 40, blue 1, yellow 5), Soy Lecithin, BHT to Retain Freshness.

CONTAINS WHEAT AND SOY INGREDIENTS.

**Nutrition Facts** Serving Size: 1 Bar (40g), Amount Per Serving: **Calories 150**, Calories from Fat 30, **Total Fat 3g** (5% DV), **Saturated Fat 0.5g** (3% DV), **Trans Fat 0g**, **Cholesterol 0mg** (0% DV), **Sodium 105mg** (4% DV), **Total Carbohydrate 30g** (10% DV), **Dietary Fiber 3g** (10% DV), **Sugars 9g**, **Protein 2g**, Vitamin A (2% DV), Vitamin C (2% DV), Calcium (20% DV), Iron (10% DV), Vitamin D (2% DV), Thiamin (8% DV), Riboflavin (6% DV), Niacin (6% DV), Vitamin B6 (6% DV), Folic Acid (4% DV), Vitamin B12 (4% DV), Zinc (6% DV) . Percent Daily Values are based on a 2,000 calorie diet.

Nutrition Information			
100g			
Amount Per Serving			
<b>Calories</b>		379.0	
Calories from Fat		70.8	
<hr/>			
<b>Total Fat</b>	7.9 g		
Saturated Fat	1.4 g		
Trans Fat	0.0 g		
<b>Cholesterol</b>	0.0 mg		
<b>Sodium</b>	258.6 mg		
<b>Total Carbohydrate</b>	74.4 g		
Dietary Fiber	6.4 g		
Sugars	23.5 g		
<b>Protein</b>	6.3 g		
<hr/>			
Vitamin A	250.0 IU	Vitamin C	3.0 mg
Calcium	500.0 mg	Iron	4.5 mg
Vitamin D	20.0 IU	Thiamin	0.3 mg
Riboflavin	0.3 mg	Niacin	3.0 mg
Vitamin B6	300.0 mcg	Folic Acid	40.0 mcg
Vitamin B12	0.6 mcg	Zinc	2.3 mg

The most accurate label information for package contents will always be on the product label. This product profile is correct through the date above. Because product formulations and related product attributes may change, this information is subject to change.

QUESTIONS? Call 1-800-767-5404  
GENERAL MILLS \* P.O. Box 200 - FS \* MINNEAPOLIS, MINNESOTA 55440

I certify that the information contained in this document is true and correct as of the date above. Sonam Sethi - General Mills Product Labeling



GENERAL MILLS

Formulation Statement for Documenting Grains in School Meals
Required Beginning SY 2013-2014
(Crediting Standards Based on Grams of Creditable Grains)

School Food Authorities (SFAs) should include a copy of the label from the purchased product package in addition to the following information on letterhead signed by an official company representative. Grain products may be credited based on previous standards through SY 2012-2013. The new crediting standards for grains (as outlined in Policy Memorandum SP 30-2012) must be used beginning SY 2013-2014. SFAs have the option to choose the crediting method that best fits the specific needs of the menu planner.

Product Name: Trix Cereal Bar Code No.: 16000-31915

Manufacturer: General Mills, Inc. Serving Size: 1.42 OZ (40g)
(raw dough weight may be used to calculate creditable grain amount)

I. Does the product meet the Whole Grain-Rich Criteria: Yes X No
(Refer to SP 30-2012 Grain Requirements for the National School Lunch Program and School Breakfast Program )

II. Does the product contain non- creditable grains: Yes X No How many grams: <3.99g
(Products with more than 0.24 oz equivalent or 3.99 grams for Groups A-G or 6.99 grams for Group H of non-creditable grains may not credit towards the grain requirements for school meals.)

III. Use Policy Memorandum SP 30-2012 Grain Requirements for the National School Lunch Program and School Breakfast Program: Exhibit A to determine if the product fits into Groups A-G, Group II or Group I. (Different methodologies are applied to calculate servings of grain component based on creditable grains. Groups A-G use the standard of 16grams creditable grain per oz eq. Group H uses the standard of 28grams creditable grain per oz eq; and Group I is reported by volume or weight.)

Indicate to which Exhibit A Group (A-I) the Product Belongs: D

Table with 4 columns: Description of Creditable Grain Ingredient\*, Grams of Creditable Grain Ingredient per Portion A, Gram Standard of Creditable Grain per oz equivalent (16g or 28g) B, Creditable Amount A + B. Row 1: Whole Grain Oats, Whole Grain Corn, Whole Wheat Flour, Brown Rice Flour, Whole Oat Flour. Row 2: Total Creditable Amount 1.0

1 Creditable grains are whole-grain meal flour and enriched meal flour.
2 (Serving size) X (% of creditable grain in formula). Please be aware serving size other than grams must be converted to grams.
3 Standard grams of creditable grains from the corresponding Group in Exhibit A.
4 Total Creditable Amount must be rounded down to the nearest quarter (0.25) oz eq. Do not round up.

Total weight (per portion) of product as purchased 1.42 OZ (40g)
Total contribution of product (per portion) 1.00 oz equivalent

I certify that the above information is true and correct and that a (40g) 1.42 OZ ounce portion of this product (ready for serving) provides 1.00 oz equivalent Grains. I further certify that non-creditable grains are not above 0.24 oz eq. per portion. Products with more than 0.24 oz equivalent or 3.99 grams for Groups A-G or 6.99 grams for Group H of non-creditable grains may not credit towards the grain requirements for school meals.

Signature of Rose Tobelmann

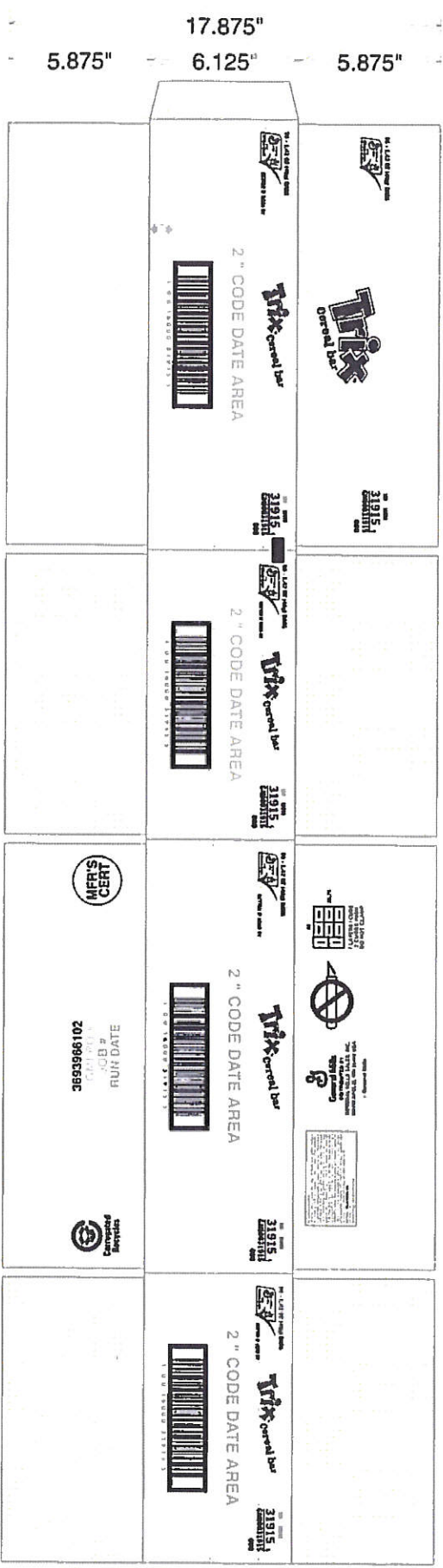
Director Title

Printed Name: Rose Tobelmann, MS, RD

Date: 8/15/2013 Phone Number: 1-800-767-5404



1.563"      17.6875"      11.875"      60.6875"      17.75"      11.8125"



**Container Graphics Corporation**  
 4841 White Bear Parkway  
 White Bear Lake, MN 55110  
 PHONE: (651) 653-1400 FAX: (651) 653-9951  
 EMAIL: whitebearlake@containergraphics.com

14-487600-1      FEBRUARY 2014 GENERAL MILLS FS      CD-102116 REV 0 GMI DATE (1/15/2007) 3693966102 TRIX CEREAL BAR      BLACK

**DO NOT USE FOR EXACT COLOR MATCH**  
 UNDER NO CONDITIONS OR CIRCUMSTANCES WILL ANY RESPONSIBILITY BE ASSURED BY OUR COMPANY FOR HOLDING A PRINTING PRESS, MISSING AN INSERTION DATE OR FOR QUALITY OR ACCURACY IN ACTUAL PRINTING OR DIECUTTING OPERATIONS. SHOULD OUR WORK BE UNSATISFACTORY OR INCORRECT UPON YOUR INSPECTION, OUR RESPONSIBILITY IS LIMITED TO REPLACEMENT OF INCORRECT NEBS, PLATES, OR CARDS, AND WILL CEASE IMMEDIATELY IF OUR WORK IS ALTERED IN ANY WAY BY SOMEONE NOT IN OUR EMPLOY.



DATE RUN  
 EBC  
 2015096596C

