

#13015

PRODUCT TECHNICAL DATA
Premium Tomato & Food Products

P.O. BOX 83 • ELWOOD, IN 46036 • TEL. (765) 557-5500 • FAX (765) 557-5501 • www.redgold.com



UFZBK2R

Revision Date
07/01/11

**RO STYLE
FANCY DICED TOMATOES
WITH GREEN CHILIES - ORIGINAL, 28 OZ**

MFG # REDBK2RC12

LABEL NET CONTENTS	28.0 oz (794g)
PACKAGE TYPE	401x411 3-pc steel can
APPEARANCE/COLOR	Tomato red color with green pieces
TEXTURE	Firm tomato pieces
FLAVOR/AROMA	Hot and biting
AVERAGE DRAINED WEIGHT (on U.S. Standard No. 8 sieve)	17.3 ozs min
USDA GRADE	U.S. Grade A / U.S. Fancy
CONTAINER VACUUM (@ 68°F)	4 in Hg min
RECOMMENDED STORAGE CONDITIONS	55 - 80°F
SHELF LIFE (@ recommended storage conditions)	30 Months
MICROBIOLOGICAL EXAMINATION	
HOWARD MOLD COUNT	12% max
	Commercial Sterility
INGREDIENT DECLARATION	
	Tomatoes With Juice, Water, Chopped Green Chili Peppers, Less Than 2% Of: Salt, Calcium Chloride, Citric Acid, Spice, Natural Flavor

PRODUCT TECHNICAL DATA
Premium Tomato & Food Products

P.O. BOX 83 • ELWOOD, IN 46036 • TEL. (765) 557-5500 • FAX (765) 557-5501 • www.redgold.com



UFZBK2R

Revision Date
07/01/11

**RO STYLE
DICED TOMATOES
WITH GREEN CHILIES - ORIGINAL, 28 OZ**
NET WT. 28 OZ. (794g)

Nutrition Facts	
Serving Size 1/2 Cup (121g)	
Servings Per Container about 7	
Amount Per Serving	
Calories 20	Calories from Fat 0
% Daily Value*	
Total Fat 0g	0%
Saturated Fat 0g	0%
Trans Fat 0g	
Cholesterol 0mg	0%
Sodium 300mg	13%
Potassium 190mg	5%
Total Carbohydrate 4g	1%
Dietary Fiber 1g	4%
Sugars 3g	
Protein 1g	
Vitamin A 10%	Vitamin C 10%
Calcium 4%	Iron 4%
* Percent Daily Values are based on a 2,000 calorie diet. Your Daily Values may be higher or lower depending on your calorie needs.	
	Calories: 2,000 2,500
Total Fat	Less than 65g 80g
Sat Fat	Less than 20g 25g
Cholesterol	Less than 300mg 300mg
Sodium	Less than 2,400mg 2,400mg
Potassium	3,500mg 3,500mg
Total Carbohydrate	300g 375g
Dietary Fiber	25g 30g

LABELING AREA

<40 in²

ADD %DV FOOTNOTE

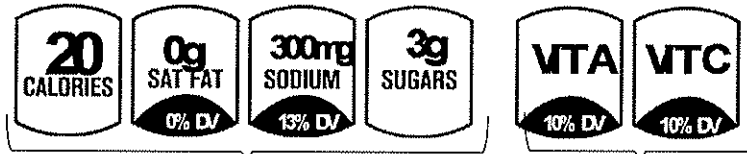
No

LABEL DIMENSIONS (WxH)

12-7/8"x4-3/8"

includes 1/2" right hand lap

PER 1/2 CUP SERVING



BASIC ICONS

SUGGESTED OPTIONAL ICONS

INGREDIENT DECLARATION

Tomatoes With Juice, Water, Chopped Green Chili Peppers, Less Than 2% Of: Salt, Calcium Chloride, Citric Acid, Spice, Natural Flavor

COMMENTS

· Labeling Potassium content is not required per FDA regulations and is left to the discretion of the customer unless you use a Potassium optional icon, then Potassium must be present in the Nutrition Fact panel.

I certify that the information above is true and correct.

10/5/2015

NAME

DATE

Director of Quality Assurance

TITLE