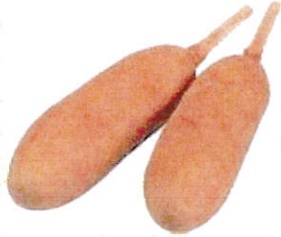


PRODUCT SPEC SHEET

WHOLE GRAIN MAPLE (PORK/TURKEY)
PANCAKE WRAPS®, 2.85 OZ., CN

PRODUCT CODE: 94087



Unit Weight/Count: 2.85 OZ / 56

Product UPC:

Case GTIN: 00075278940877

Net Case Weight: 10.00 LB

Case Dimensions (LxWxH) O.D: 17 IN x 11.0 IN x 4.875 IN

Case Cube: .53 CF

Pallet Configuration: 9 x 12

Cases/Pallet: 108

Case Tare: 1 LB

EDI UPC: 007527894087

FEATURES & BENEFITS

- FULLY COOKED GROUND PORK & TURKEY LINK WRAPPED IN 100% WHOLE GRAIN MAPLE FLAVORED PANCAKE BATTER
- 2.85 OZ. UNIT
- CN LABELED - SERVES 1 OZ M/MA & 1 OZ. EQUIVALENT GRAINS

INGREDIENTS

GROUND PORK, TURKEY AND VEGETABLE PROTEIN LINK: GROUND PORK (NO MORE THAN 30% FAT), MECHANICALLY SEPARATED TURKEY, WATER, CONTAINS 2% OR LESS OF TEXTURED VEGETABLE PROTEIN PRODUCT (SOY PROTEIN CONCENTRATE, CARAMEL COLOR), ZINC OXIDE, NIACINAMIDE, FERROUS SULFATE, COPPER GLUCONATE, VITAMIN A PALMITATE, CALCIUM PANTOTHENATE, THIAMINE MONONITRATE, PYRIDOXINE HYDROCHLORIDE, RIBOFLAVIN, CYANOCOBALAMIN), SALT, POTASSIUM LACTATE, POTASSIUM ACETATE, SPICES, SODIUM PHOSPHATE, POTASSIUM CHLORIDE, SUGAR, CARAMEL COLOR, SODIUM DIACETATE.
BATTER: WATER, WHOLE WHEAT FLOUR, SUGAR, SOYBEAN OIL, CONTAINS LESS THAN 2% OF LEAVENING, (SODIUM ACID PYROPHOSPHATE, SODIUM BICARBONATE), NATURAL AND ARTIFICIAL SWEET MAPLE FLAVOR (MODIFIED CORN STARCH, ACESULFAME POTASSIUM, NATURAL FLAVORING, MAPLE SYRUP, CARAMEL COLOR), SALT, EGG YOLK, ARTIFICIAL FLAVOR, SOY FLOUR. FRIED IN VEGETABLE OIL.
CONTAINS: WHEAT, SOY, EGGS, AND GLUTEN.

PREPARATION

RE HEATING INSTRUCTIONS
DEEP FRYER 350°F - FROZEN: NOT RECOMMENDED;
MICROWAVE HIGH (1100 WATTS) – FROZEN: 30 SECONDS, TURN THEN 30 MORE SECONDS; THAWED: 20-25 SECONDS, TURN THEN 20-25 MORE SECONDS - QUANTITY -2
CONVENTIONAL OVEN 350°F - FROZEN: 31-33 MINUTES ; THAWED 22-25 MINUTES. QUANTITY - FULL SHEET PAN
CONVECTION OVEN 350°F - FROZEN: 16-18 MINUTES ; THAWED 10-12 MINUTES. QUANTITY - FULL SHEET PAN

INTERNAL TEMPERATURE OF PRODUCT SHOULD REACH 160°F. CAUTION: PRODUCT WILL BE HOT. TIMES AND TEMPERATURES MAY VARY BASED ON ACTUAL EQUIPMENT AND QUANTITY OF PRODUCT PREPARED. ADJUST ACCORDINGLY.

CN INFORMATION

THIS PRODUCT IS CN LABELED
EACH 2.85 OZ PANCAKE WRAP PROVIDES 1.00 OZ. EQUIVALENT MEAT/MEAT ALTERNATE AND 1.00 OZ EQUIVALENT GRAINS.

SHELF LIFE

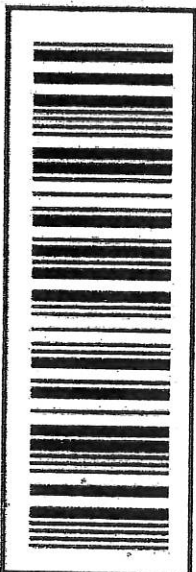
TOTAL MFR. FROZEN SHELF LIFE IS 365 DAYS FROM DATE OF PACK

Nutrition Facts

Serving Size 1 WRAP (2.85 oz.) 80g
Servings Per Container 56

Amount Per Serving		Calories from Fat 130	
Calories 240			
		% Daily Value*	
Total Fat 15 g		23%	
Saturated Fat 4.5 g		23%	
Trans Fat 0 g			
Cholesterol 25 mg		8%	
Sodium 360 mg		15%	
Total Carbohydrate 18 g		6%	
Dietary Fiber 2 g		8%	
Sugars 4 g			
Protein 7 g			
Vitamin A 0 %		Vitamin C 0 %	
Calcium 2 %		Iron 8 %	
*Percent Daily Values are based on a 2,000 calorie diet. Your daily values may be higher or lower depending on your calorie needs.			
	Calories:	2,000	2,500
Total Fat	Less than	65g	80g
Sat Fat	Less than	20g	25g
Cholesterol	Less than	300mg	300mg
Sodium	Less than	2,400mg	2,400mg
Total Carbohydrate		300g	375g
Dietary Fiber		25g	30g
Calories per gram: Fat 9 • Carbohydrate 4 • Protein 4			





FOSTER FARMS

094087

00075278940877

BEST IF USED BY MAR/05/2015

MAPLE FLAVORED, WHOLE GRAIN

PANCAKE WRAPS

KEEP FROZEN

PANCAKE BATTER AROUND A PRE-COOKED GROUND PORK, TURKEY AND TEXTURED VEGETABLE PROTEIN LINK, CARAMEL COLOR ADDED

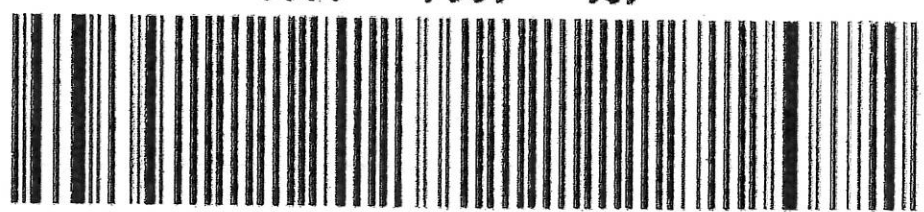
Ground Pork, Turkey And Textured Vegetable Protein Link Ingredients: Ground Pork (No More Than 30% Fat), Mechanically Separated Turkey, Water, Contains 2% Or Less Of Textured Vegetable Protein Product (Soy Protein Concentrate, Caramel Color, Zinc Oxide, Niacinamide, Ferrous Sulfate, Copper Gluconate, Vitamin A Palmitate, Calcium Pantothenate, Thiamine Mononitrate, Pyridoxine Hydrochloride, Riboflavin, Cyanocobalamin), Salt, Potassium Lactate, Potassium Acetate, Spices, Sodium Phosphate, Potassium Chloride, Sugar, Caramel Color, Sodium Diacetate.

Batter Ingredients: Water, Whole Wheat Flour, Sugar, Soybean Oil, Contains 2% Or Less Of Leavening (Sodium Acid Pyrophosphate, Sodium Bicarbonate), Natural And Artificial Sweet Maple Flavor (Modified Corn Starch, Acesulfame Potassium, Natural Flavoring, Maple Syrup, Caramel Color), Salt, Egg Yolks, Soy Flour, Artificial Flavor. Fried In Vegetable Oil.

Contains Wheat, Soy, Eggs, And Gluten

Copy not for documenting
Federal meal requirements

<p>CN</p> <p>Each 2.85 oz. Pancake Batter Wrapped Ground Pork, Turkey And Vegetable Protein Link Provides 1.00 oz. Equivalent Meat/Meat Alternate And 1.00 oz. Equivalent Grains For Child Nutrition Meal Pattern Requirements. (Use Of This Logo And Statement Authorized By The Food And Nutrition Service, USDA 02-14).</p>	<p>CN</p> <p>089715</p>
---	--------------------------------



101 - 4064 - 0026



NET WT. 10.00 LBS.

FOSTER FARMS
LIVINGSTON, CA 95334

56 COUNT