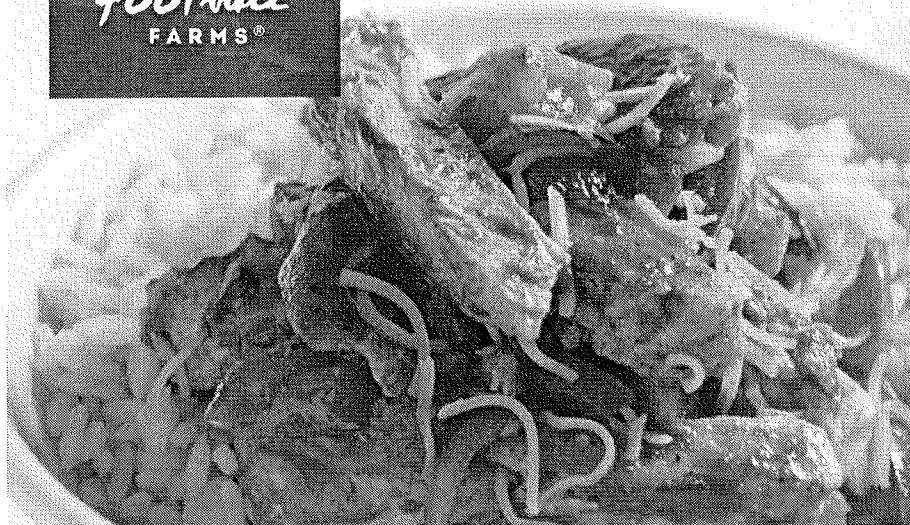




Versatility is Delicious.™



FAJITA SEASONING MIX

Foothill Farms® Fajita Seasoning Mix is a zesty blend of authentic Mexican spices and seasonings for tasty fajitas. Make with beef, chicken, turkey or pork. The seasoning adds well-balanced flavor to meats and vegetables that's lively but not too spicy.

INGREDIENTS

Maltodextrin, Salt, Enriched Bleached Wheat Flour (Niacin, Iron, Thiamin Mononitrate, Riboflavin, Folic Acid), Onion, Paprika, Garlic, Spice, Soy Sauce (Wheat, Soybeans, Salt), Sugar, Citric Acid, Cara-mel Color, Partially Hydrogenated Soybean Oil, Extractive of Paprika, Less Than 2% Silicon Dioxide (anticaking).



PREP INSTRUCTIONS

Heat ½ c vegetable oil in a large skillet. Sauté 3 lbs of sliced onions and 2 ½ lbs sliced bell peppers until tender. Remove from skillet and set aside. (Optional: sauté 2 ½ lbs of tomato wedges with onions and peppers.) Sear 7 lbs of sliced sirloin steak (or 8 lbs sliced chicken) in same skillet. Drain pan juices from skillet into measuring cup. Add enough water to pan juices to make 2 c liquid. Return liquid to skillet. Add contents of package (8.9 oz) to skillet and mix thoroughly. Bring to a boil. Reduce heat and simmer, uncovered, 3-5 minutes, stirring occasionally. Stir in reserved sautéed vegetables, heat thoroughly and serve.

For Marinade: Add contents of package (8.9 oz) to 3 qts water and 2 c lemon juice or vinegar. Mix well. Divide marinade into two equal portions. Combine half of the marinade with your choice of meat. Cover and refrigerate overnight. Store the remaining marinade in refrigerator in separate covered container. Drain meat and discard marinade. Grill meat. Let set several minutes to allow the juices to distribute and slice. In a large skillet, combine grilled meat with sautéed vegetables. Add remaining marinade, heat thoroughly, stirring occasionally.

SPECIFICATIONS

Product Code:	V418-AJ190
UPC:	10072058161009
DOT Foods Code:	436398
Case Pack:	6/8.9 oz
Serving Size:	2 tsp dry
Servings per Case:	288
Case Dimensions:	8.9"x6.9"x6.3"
Cases/Layer:	30x8
Cases/Pallet:	240
Case Volume:	0.21 ft ³
Case Weight:	3.9 lb
Kosher Status:	Ⓚ
Storage:	Dry
Shelf Life:	1 year
Allergens:	Soy, Wheat
Approx Portion Cost:	4¢
Approx Cost Per Fl Oz:	N/A

Nutrition Facts

Serving Size: 2 tsp dry (5g)
Servings Per Container: About 48

Amount Per Serving		
Calories 15	Calories From Fat 0	
	Per Serving	% Daily Value*
Total Fat	0g	0%
Saturated Fat	0g	0%
Trans Fat	0g	
Cholesterol	0mg	0%
Sodium	370mg	15%
Total Carbohydrate	3g	1%
Dietary Fiber	0g	0%
Sugars	0g	
Protein	0g	

Vitamin A 4% • Vitamin C 0%
Calcium 0% • Iron 2%

*Percent Daily Values are based on a 2,000 calorie diet.

©2015 Kent Precision Foods Group, Inc. Foothill Farms is a registered trademark of Kent Precision Foods Group, Inc.